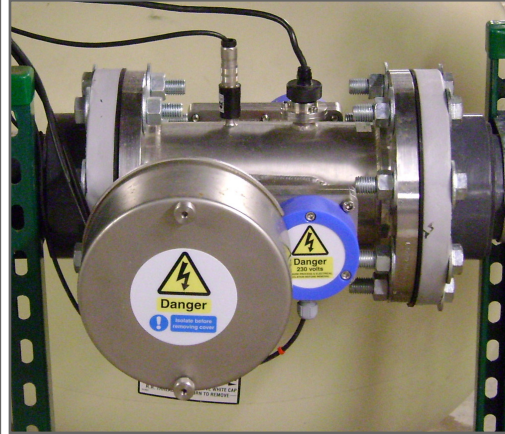


SPECIFICATION SHEET

ECP-113-5



Single lamp, medium pressure UV system for a wide range of applications. Validated for drinking water per USEPA UVDGM and NSF 61

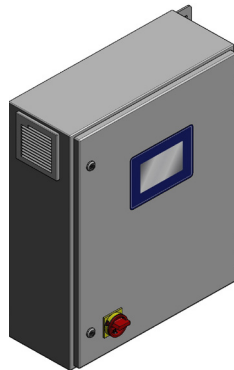
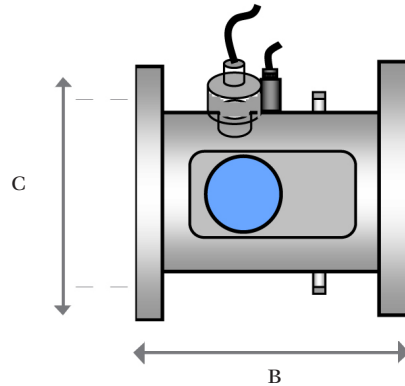
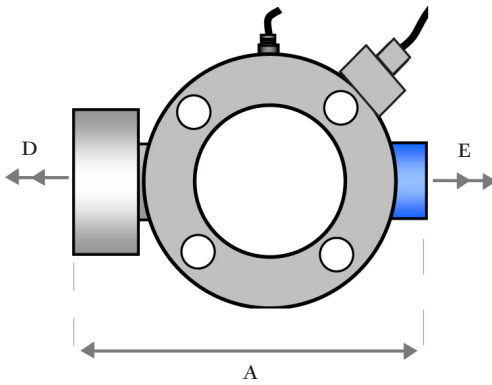
CHAMBER

316L SS
ANSI 150# flanged connections
Install inline horizontally or vertically
Features
Variable powered lamps
Dry UV intensity monitors
High purity quartz sleeves
Low voltage automatic wiper
One piece wiper ring
Temperature sensor
Drain and vent ports

Model	Connection	# of Lamps	Lamp Power Per Lamp	Dimensions (inches)				
				A	B	C	D	E
ECP-113-5	3 inches	1	1.3 kW	17	12	7.5	16	6

CONTROL SYSTEM

NEMA 12 epoxy coated mild steel enclosure
Operational 32-113°F, RH < 90%
Features
7" HMI touch screen
Microprocessor system for basic control to full plant integration
MODBUS over Ethernet communication
Internet monitoring capability
Data logging capability with remote access
Multiple warning alarms
Additional information: Spectra Touch Spec Sheet



SPECTRA Touch Control Panel

Height	30 in
Width	24 in
Depth	8 in
Voltage	220 V
Frequency	60 Hz
Phase	1

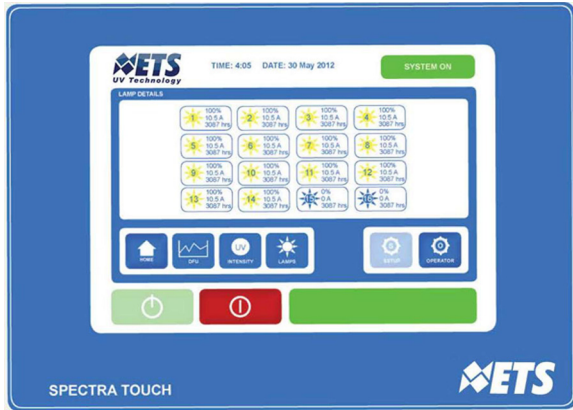
SYSTEM OPTIONS

304 or 316 NEMA 4X enclosure
Certified explosion-proof design
Skid mounted
Containerized
Internal/external polish or electropolish
Sanitary connections

INSTALLATION NOTES

Provide necessary maintenance space
Install in a dry area
Provide floor drain or sump
Lamps submerged at all times
Minimum of two conduits required
Chamber must be grounded

ETS UV Technology microprocessor control system offers multiple levels of operation from basic controls to full plant system integration. Available on all UV systems. Existing systems can be upgraded to include a TOUCH control panel.



SIMPLE CONTROLS AND DISPLAY

- 7" resistive touch screen human machine interface (HMI)
- Glare free operation
- On screen trending
- STOP soft touch push buttons
- RESET soft touch push buttons
- Simple operation for any level of technical experience and expertise
- All alarm functions have a simple text message display

INTERFACE CONTROLS

- Ethernet connectivity/WiFi capability
- Selectable custom input and outputs
- Local and remote operation
- Process interrupt (valves, flow meters or pressure switches)
- Low UV alarm and shutdown
- Bleed temperature
- Flow meter input
- Automatic restart
- Variable power dosing
- Duty/Standby automatic changeover

ADVANCED DISPLAY FEATURES

- Improved noise resistance
- Distributed I/O possible
- On/Off control
- Lamp running indication/lamp current
- Power on indication
- Elapsed hours meter
- Lamp failed contact (voltage free)
- UV intensity & UV dose mJ/cm²
- Flow rate (accepts a 4-20ma signal from a flow meter)
- Temperature, low UV alarm
- System spares listing
- Ground fault
- Wiper fault

ADVANCED DISPLAY FEATURES

The Touch has a built in data logging facility (retrievable by users on a standard PC or laptop). The parameters logged are:

- UV intensity required (set point)
- UV intensity measured
- Lamp current
- Temperature
- Flow (if flow meter connected)
- Time and date
- Alarms generated: restrike timer, low intensity, low dose, high temperature, PSU temperature, lamp fault and ground fault